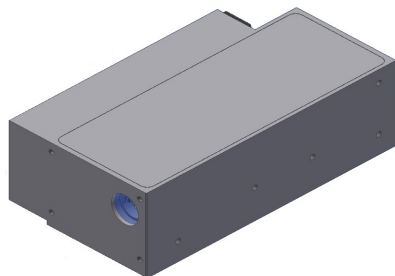


# One – 100µJ – 1030nm

Spec# 18102

## Miniaturized Q-Switched DPSS Laser



### FEATURES

- Miniaturized Design
- up to 100 µJ
- Q-Switched externally triggered laser
- up to 10 kHz
- 15 V DC Power Supply Input

### Technical Specifications

Pulse Energy	up to 100	µJ
Q-Switch Repetition Rate	Fixed in the range 0 to 10 kHz (factory set)	
Wavelength	1030	nm
Pulse Width	10 to 20 (option < 5 ns)	ns
Pulse-to-pulse energy stability	St. Dev. < 2 %	
M <sup>2</sup>	< 1.5	
Beam diameter @ 1/e <sup>2</sup> (integrated BEX)	< 8 (option 3 mm)	mm
Electrical Requirements	DC Power Supply 15 V / < 5 A	
Cooling	Contact Cooled	
Dimensions	13 x 7 x 4 (complete unit including driver)	cm <sup>3</sup>
Weight	< 1	kg

### Options Available:

- Beam Expander, Red Aiming beam
- Photodiode for synchronization with external device
- Air Cooled Heat-sink

### Applications:

- Portable LIDAR
- Instrumentation and measurement
- Remote sensing and pollution monitoring



All information included in this document is subject to change without notice.  
Updated datasheets can be provided on request.

For further details, please contact your local **Bright Solutions** sales representative or visit our website at [www.brightsolutions.it](http://www.brightsolutions.it)

**Bright Solutions S.r.l**  
Via Artigiani 27, 27010  
Cura Carpignano (Pv) Italy  
Ph.: +39 0382583094  
e-mail: [sales@brightsolutions.it](mailto:sales@brightsolutions.it)  
[www.brightsolutions.it](http://www.brightsolutions.it)